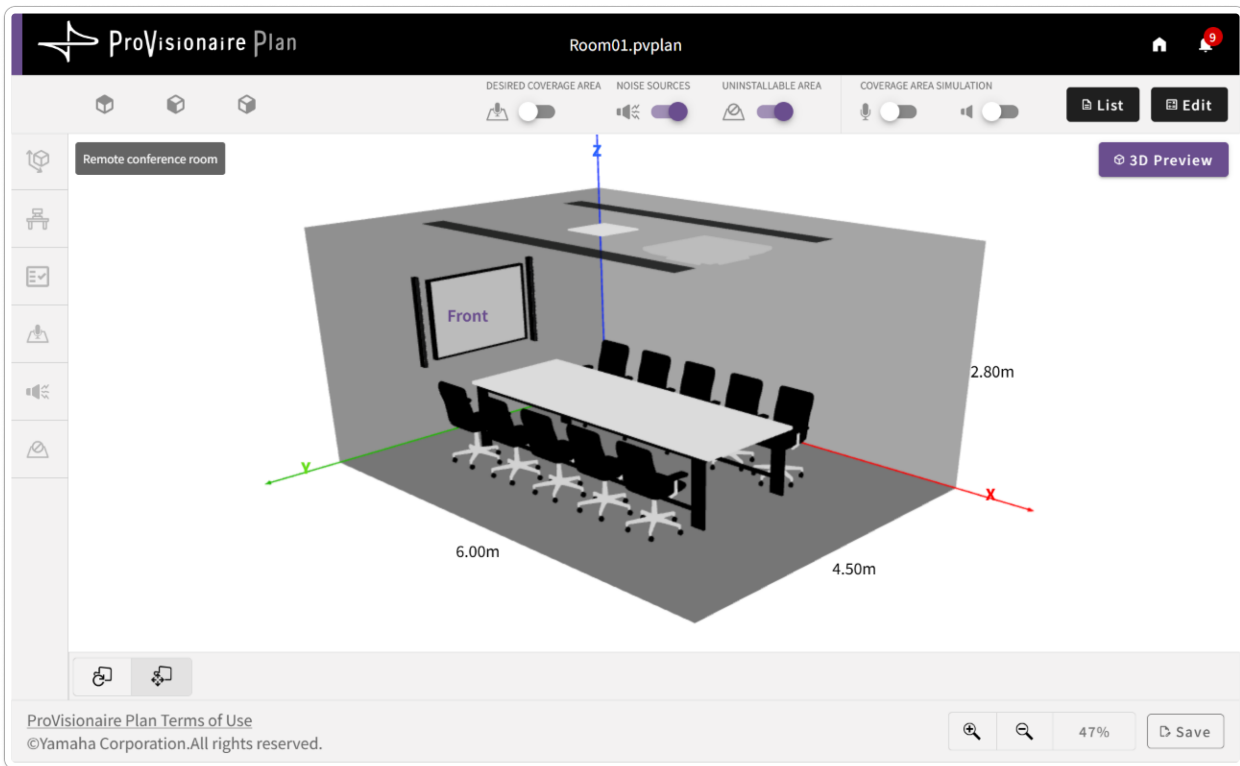


# ProVisionaire Plan User Guide



# Contents

<b>Introduction</b>	<b>3</b>
About ProVisionaire Plan	3
What you can do with ProVisionaire Plan	3
Operating Environment of ProVisionaire Plan	3
Room conditions supported by ProVisionaire Plan	3
About this Guide	4
<b>Operating Procedures</b>	<b>5</b>
Opening ProVisionaire Plan/Saving	5
Opening ProVisionaire Plan	5
Saving a file	6
Creating a Plan in ProVisionaire Plan	7
1. Selecting the room's purpose	7
2. Specifying room conditions by following the procedure guide	8
3. Editing room conditions/arrangement	9
4. Generating the plan	10
5. Reviewing the generated plan	11
6. Reviewing the simulation of the sound coverage areas	13
7. Changing the device quantities (if desired)	14
<b>Details on Operations</b>	<b>15</b>
Room Condition Specification Screens	15
Specifying the room size	15
Specifying the furniture arrangement	16
Selecting room requirements	17
Specifying sound coverage areas	18
Specifying noise sources and their locations	19
Specifying locations where devices cannot be installed	20
Working with Objects	21
<b>Details on Screens</b>	<b>23</b>
Room Condition Specification Screen/Procedure Guide	23
Arrangement Views/Editing Tools	24
Buttons for Plans/Proposed Devices	26
Application elements	27

# Introduction

## About ProVisionaire Plan

---

ProVisionaire Plan is a Web application that suggests configurations for audio systems to be installed in conference rooms, seminar rooms, etc. Simply entering the room's purpose, environment and requirements automatically generates a plan for a sound system using ADECIA (a comprehensive remote conferencing solution).

## What you can do with ProVisionaire Plan

---

### ✓ Get started right away by using your browser

Since this Web application does not require any software to be installed, you can get started as soon as necessary.

### ✓ Automatically generate a plan of the appropriate devices and their arrangement based on the room's purpose, size and environment

Select the room's purpose and specify its size as well as the locations of existing furniture, obstacles and noise sources to automatically generate a plan of the devices and their arrangement suitable for that environment.

### ✓ Visualize and review the coverage areas of microphones and speakers

Review the coverage areas of the microphones and speakers as if they were installed according to the plan. This can be used to justify proposals or to check whether the desired area would be covered if the number of devices or their arrangement is changed.

## Operating Environment of ProVisionaire Plan

---

ProVisionaire Plan is a Web application that runs in a browser. This application works with the following browsers connected to the Internet.

- **Microsoft Edge**
- **Google Chrome**

\* We recommend installing the latest versions of the browsers listed above.

\* We cannot guarantee that the application will work on devices other than computers.

## Room conditions supported by ProVisionaire Plan

---

The compatible room conditions are listed below.

Room size	Minimum dimensions: 2.0 m wide, 2.0 m long, 2.0 m high Maximum dimensions: 15.0 m wide, 15.0 m long, 4.0 m high
Room shape	Cuboid

## About this Guide

---

This guide provides details on using ProVisionaire Plan.

### Trademarks

- Windows is a registered trademark of Microsoft Corporation in the United States and other countries.
- Other company names and product names mentioned in this guide are trademarks or registered trademarks of their respective companies.

### About the contents of this guide

- All copyrights relating to this software and User Guide are owned by Yamaha Corporation.
- Unauthorized copying or modification of this software or the User Guide in part or in whole is prohibited.
- We assume no responsibility whatsoever for any consequences or subsequent impacts resulting from the use of this software or User Guide.
- This software is not guaranteed to work with a Windows touchscreen.
- The illustrations and screens in this User Guide are for instructional purposes only.
- The operation and screen examples provided in this User Guide are based on Windows 11.
- For the purpose of improvement, this software and User Guide are subject to change without notice.  
The latest version of the User Guide can be downloaded from the Yamaha Pro Audio website.

<https://www.yamahaproaudio.com/>

## Opening ProVisionaire Plan/Saving

---

### Opening ProVisionaire Plan

After the ProVisionaire Plan URL is accessed in the browser, the top screen appears.

#### ProVisionaire Plan

<https://provisionaire.yamaha.com/pvplan/>

Top screen (partial)



**[New] button** Creates a new plan.

> [Creating a Plan in ProVisionaire Plan](#) (page 7)

**[Open] button** Creates a plan by resuming a saved file.

- The file selection screen appears. Select a file, and then click the [Open] button.

✓ **Clicking either the [New] or [Open] button displays the Terms of use. Read the complete Terms of use. Select the check box to agree, and then click the [Next] button to continue to the next screen.**

#### **Note**

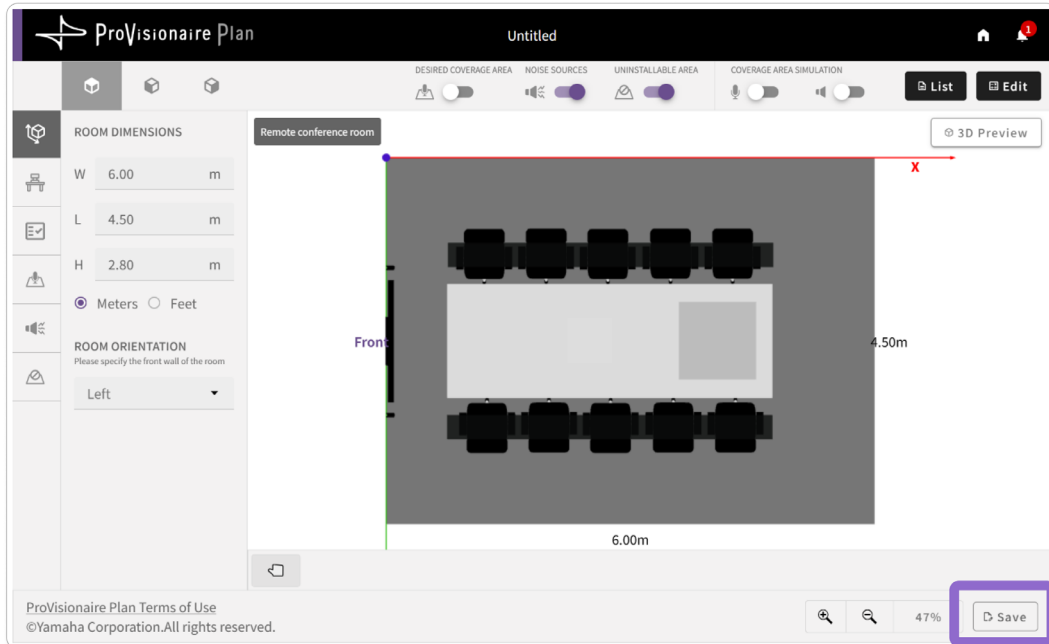
After continuing to the next screen, you can view the Terms of use by clicking the link in the bottom left of the screen.

## Saving a file

The generated plan can be saved. The saved plan file can be opened from the top screen.

### Procedure for saving a file

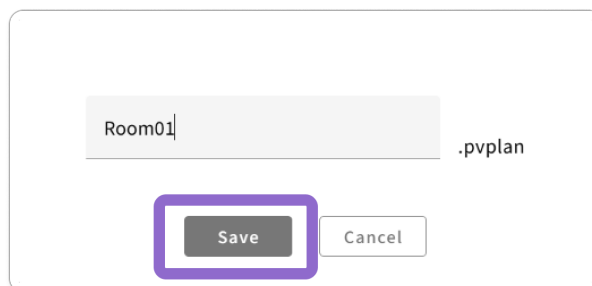
1. Click the **[Save]** button.



The file selection screen appears.

2. In the file selection screen, specify the file name, and then click the **[Save]** button.

File selection screen



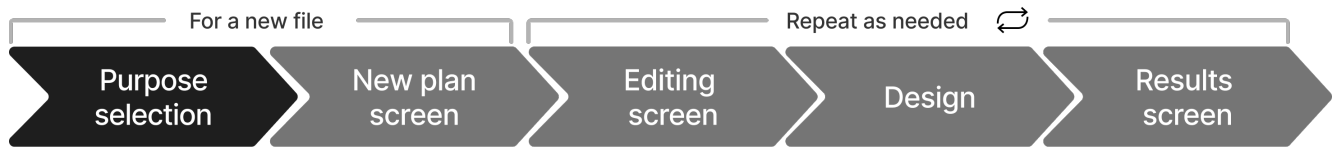
The file is saved to the download folder specified in your browser.

### Note

- The file is saved with the “.pvplan” extension.
- A plan in the new plan screen cannot be saved. In order to save a new plan, specify all of the conditions, and then close the new plan screen.
  - › New plan screen: [Specifying room conditions by following the procedure guide](#) (page 8)
- To open a saved file, click the **[Open]** button in the top screen.
  - › [Opening ProVisionaire Plan](#) (page 5)

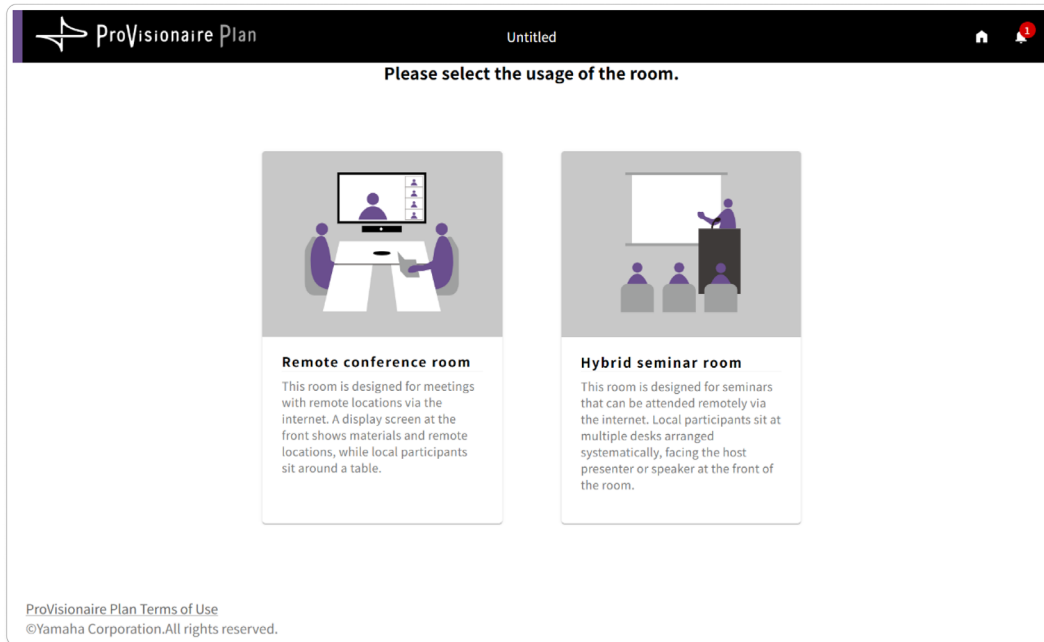
# Creating a Plan in ProVisionaire Plan

## 1. Selecting the room's purpose



### Purpose selection screen

Click the purpose of the room for which you want to create a plan.



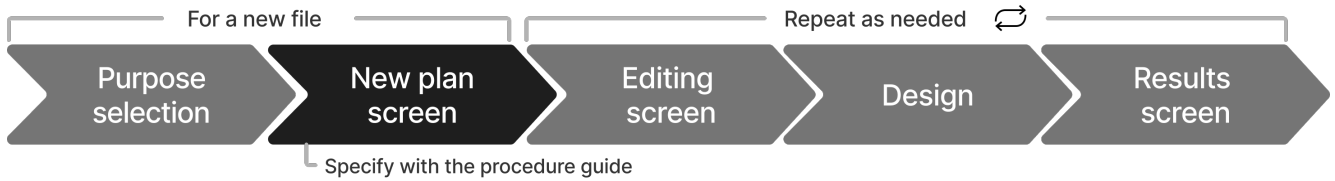
**Remote conference room** Creates a plan that suits your web conference room.

**Hybrid seminar room** Creates a plan for a seminar room used on-site and/or online.

#### **Note**

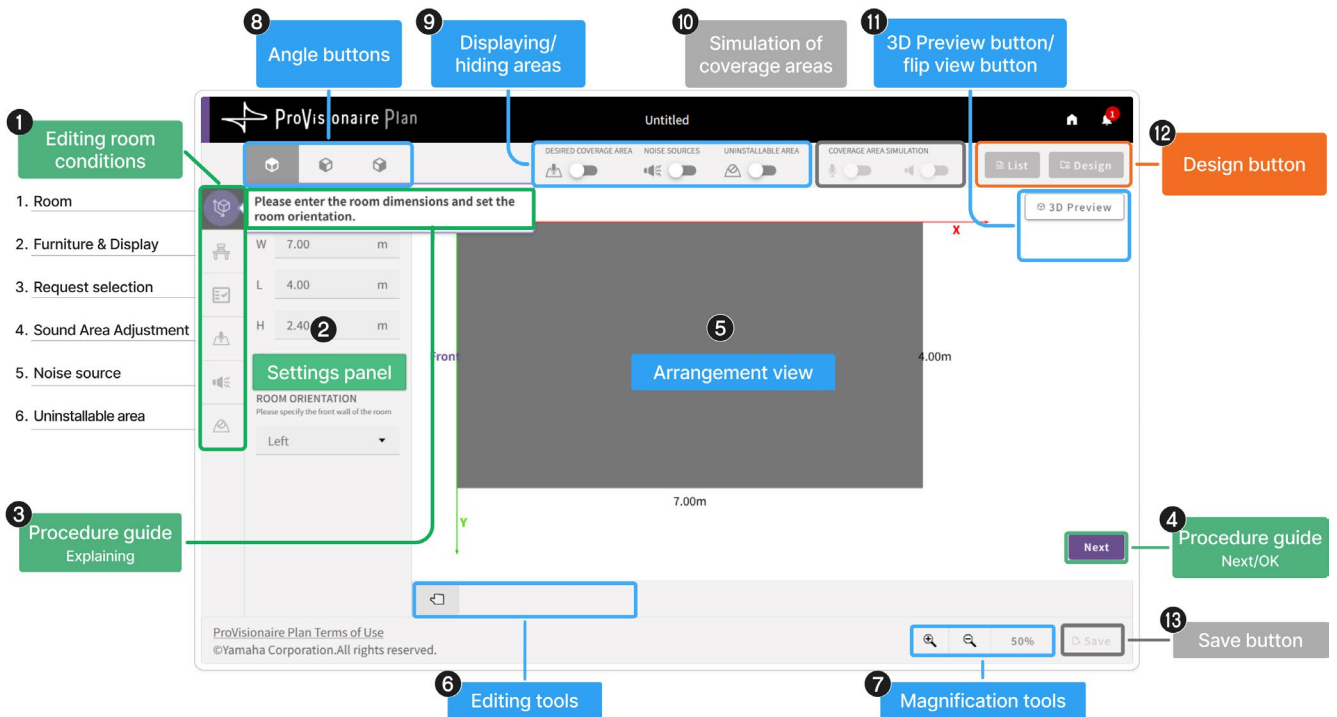
- The room purpose selected in this screen cannot be changed later.
- ✓ After a purpose is selected, a confirmation message appears. Click the [OK] button to continue to the new plan screen.
  - › 2. [Specifying room conditions by following the procedure guide](#) (page 8)

## 2. Specifying room conditions by following the procedure guide



### New plan screen

In the new plan screen, follow the procedure guide to specify the room conditions in the given order. Clicking the [Next] button continues to the next condition specification screen. The specified information can be edited later in the editing screen.



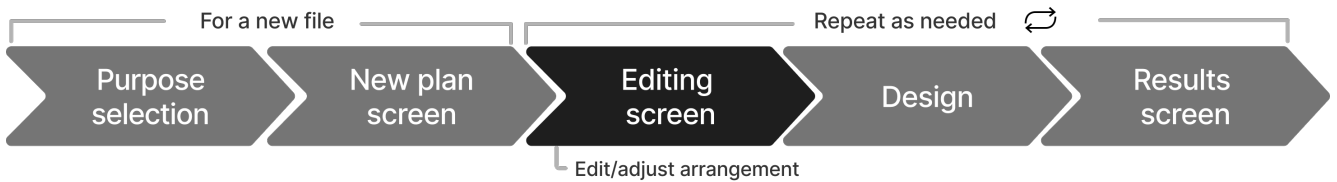
No.	Item	Description	Reference page
① ②	Specify room conditions	Specify the room conditions in the given order.	page 15
③ ④	Procedure guide	Clicking button ④ continues to the next condition specification screen.	page 23
⑤	Arrangement view	The conditions specified with ① ② appear in the arrangement view.	page 24
⑥ ⑦	Tools for arrangement view	Use these buttons and tools to adjust the arrangement view.	page 24
⑧ ⑨ ⑪	Switch display of arrangement view	Use these buttons to switch the display of the arrangement view. (⑩ is not available in the new plan screen.)	page 24
⑫	Design (not available)	A plan cannot be generated or saved in the new plan screen.	
⑬	Save (not available)		

✓ After specifying all of the room conditions, click the [OK] button (④) to close the new plan screen.

- > 3. [Editing room conditions/arrangement](#) (page 9)



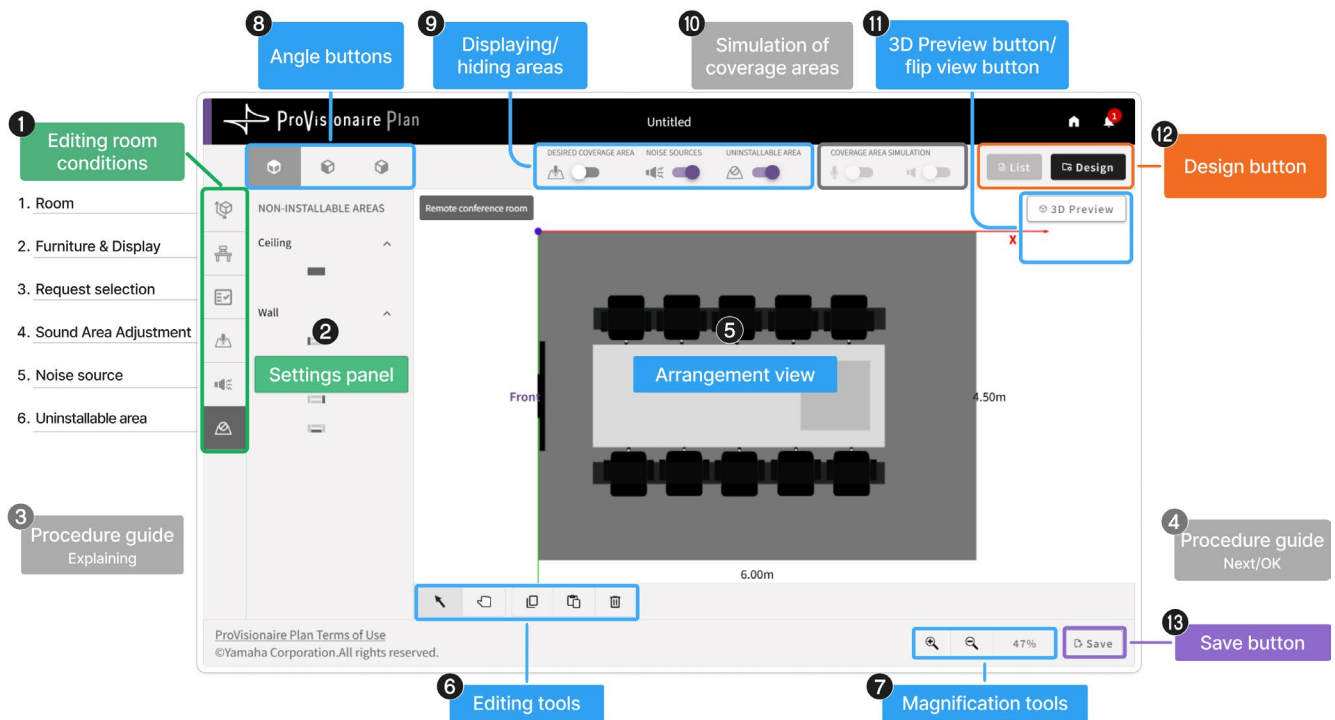
### 3. Editing room conditions/arrangement



#### Editing screen

In the editing screen, select an item under **Room conditions** (1), and then edit the information as desired. If no editing is required, generate a plan and save it as is. The following can be performed in the editing screen.

- [Generating the plan](#) (page 10)
- [Saving a file](#) (page 6)

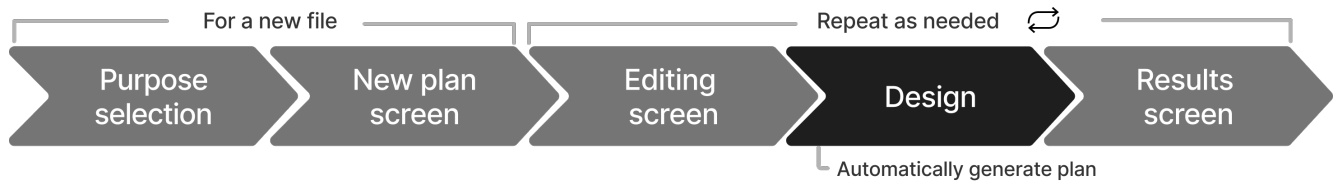


No.	Item	Description	Reference page
1 2	<b>Edit room conditions</b>	Select the item to be edited, and then edit the information.	page 15
3 4	<b>Procedure guide (not displayed)</b>	The procedure guide does not appear in the editing screen.	
5	<b>Arrangement view</b>	The conditions specified with 1 2 appear in the arrangement view.	page 24
6 7	<b>Tools for arrangement view</b>	Use these buttons and tools to adjust the arrangement view.	page 24
8 9 11	<b>Switch display of arrangement view</b>	Use these buttons to switch the display of the arrangement view. (10 is not available in the editing screen.)	page 24
12	<b>Design</b>	Automatically generates a plan.	page 10
13	<b>Save</b>	Saves the file.	page 6

✓ After specifying all of the room conditions, click the [Design] button (12).

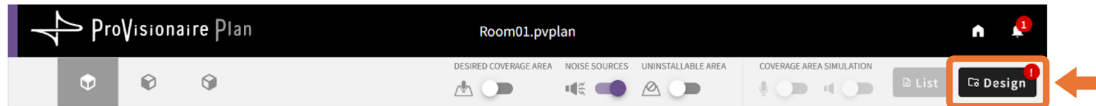
- > 4. [Generating the plan](#) (page 10)

## 4. Generating the plan

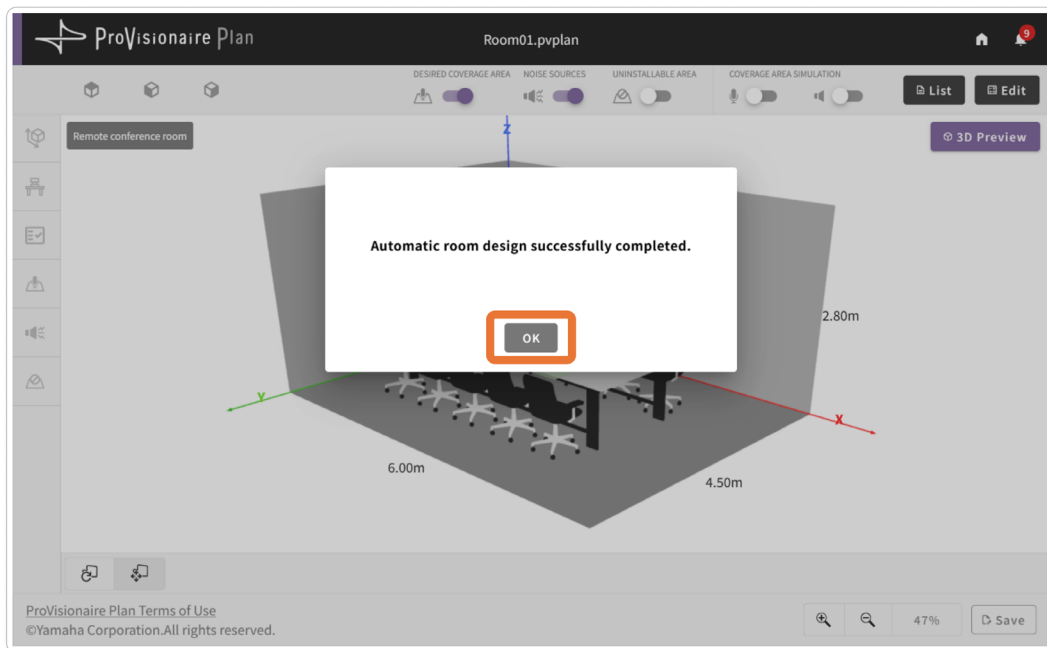


### Procedure for generating the plan

Click the [Design] button to start automatically generating the plan.



When the plan has been generated, the plan completed message appears.



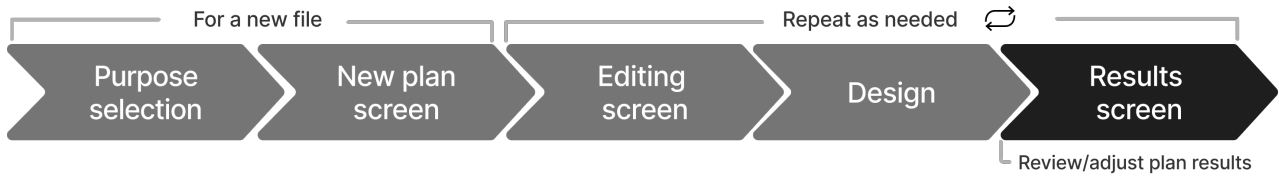
✓ Click the [OK] button to display a 3D preview of the generated plan.

> 5. [Reviewing the generated plan](#) (page 11)

### Note

Depending on the specified conditions, it may take up to 30 seconds for the plan to be generated.

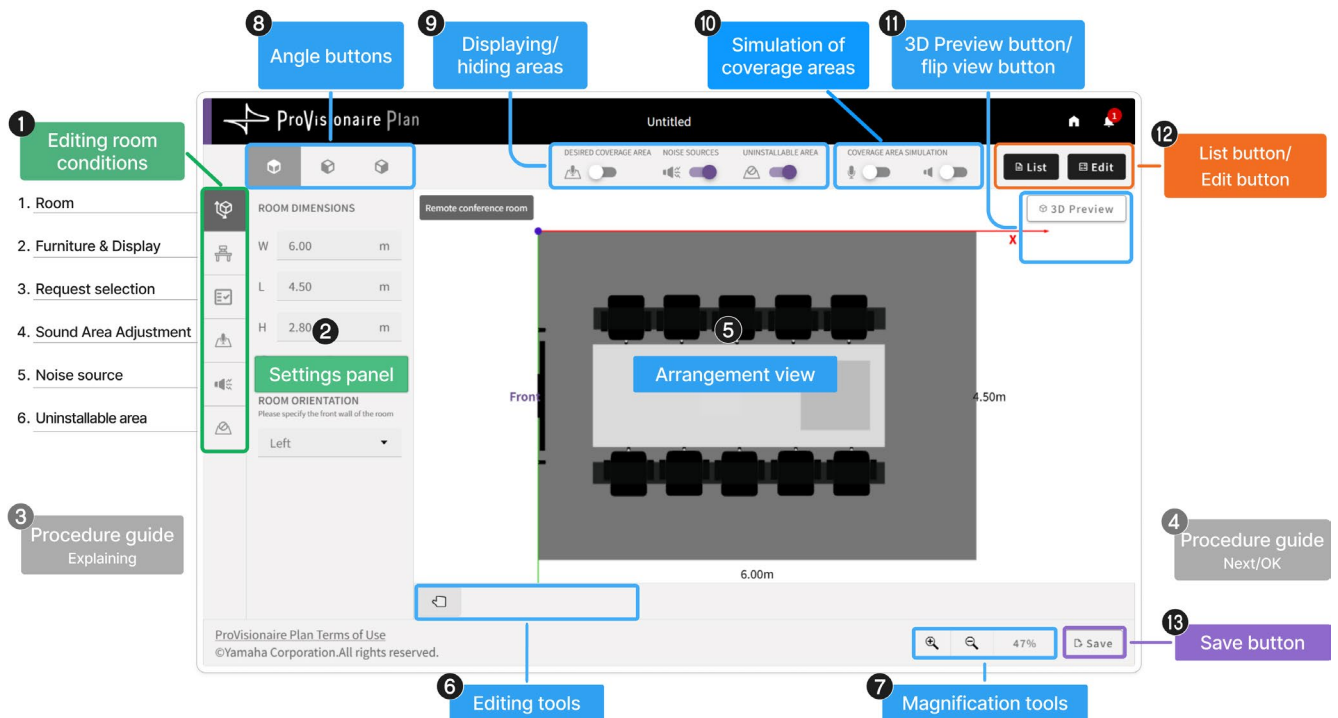
## 5. Reviewing the generated plan



### Results screen

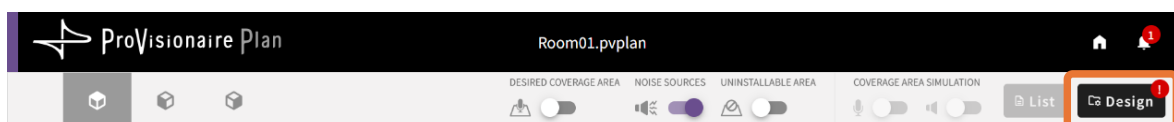
Devices that meet the specified conditions are arranged in the screen. The following can be performed in the results screen.

- [Reviewing the list of proposed devices](#) (page 12)
- [Reviewing the simulation of the sound coverage areas](#) (page 13)
- [Saving a file](#) (page 6)
- [Changing the device quantities \(if desired\)](#) (page 14)



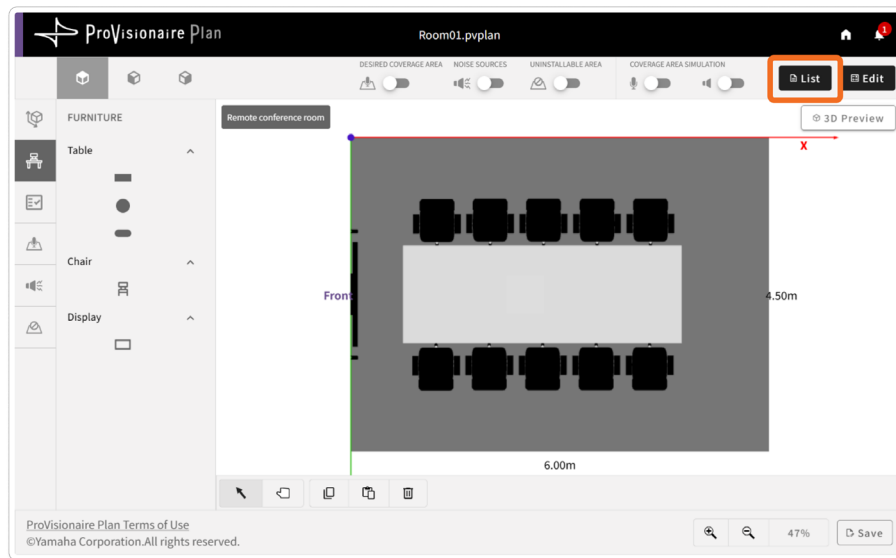
### Note

- When the plan has been generated, a [3D preview] of the results appears. To edit the room conditions, click the [3D Preview] button or the desired angle button.
- Return to the editing screen to edit the room conditions or arrangement. A notification badge (1) will appear on the [Design] button. To apply the changes to the plan, click the [Design] button to regenerate a plan.

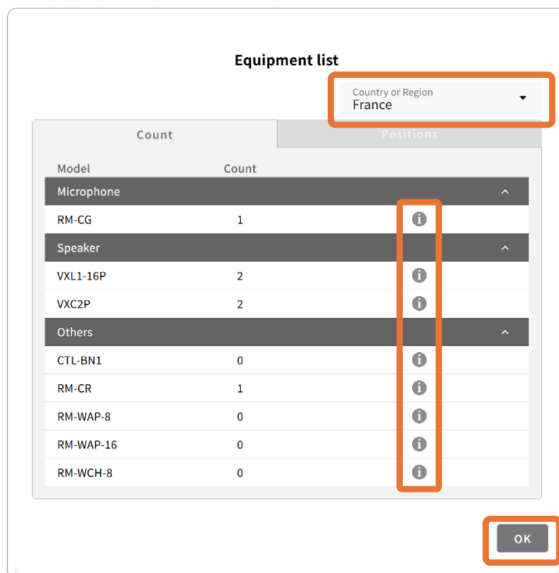


## Reviewing the device list

1. Click the [List] button.



2. A list of devices proposed by the automatically generated plan appears.



### Reviewing the devices and quantities

The devices with their quantities are listed by type.

### Reviewing device details

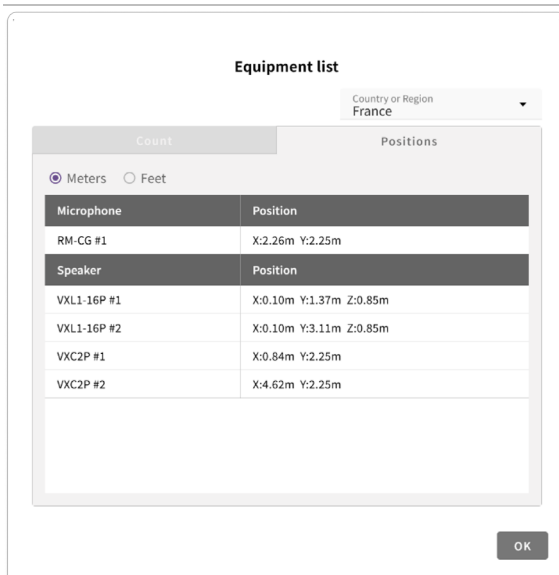
You can visit the product website for each device.

- Specify your location from the [Country or Region] list in the top right of the screen.
- Click the **i** (information) mark in the row of the model number to open the desired product website of the specified country or region.

\* If a product is not sold in the selected region, a label appears indicating that the product is unavailable.

### Closing the list

Click the [OK] button to close the device list.

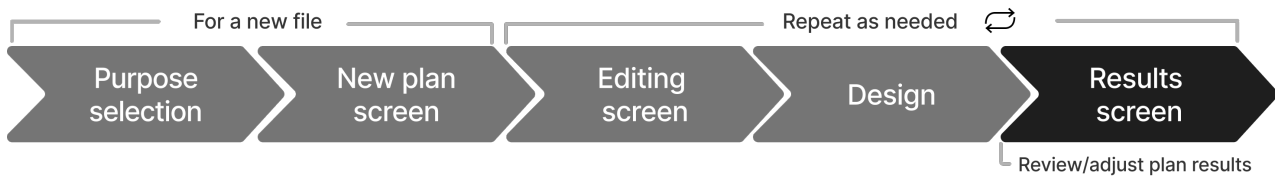


### Reviewing the installation positions

On the "Location" tab, review the location of each device.

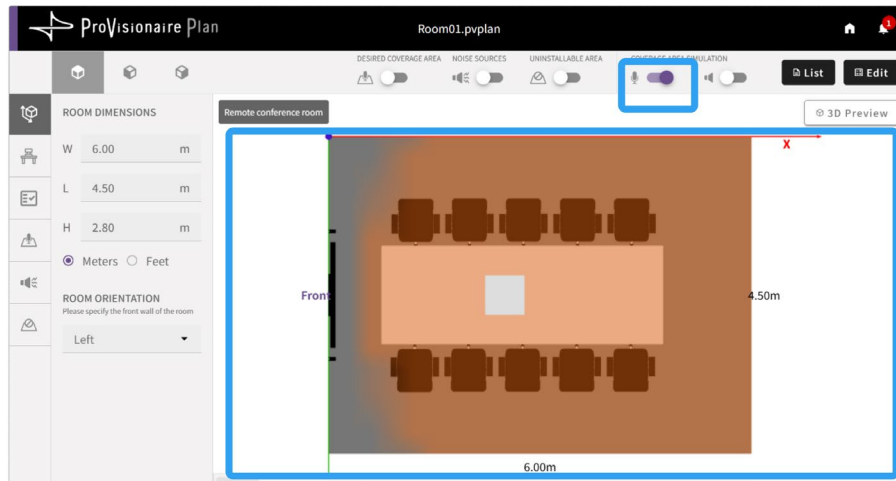
Each device is also displayed in the arrangement view.

## 6. Reviewing the simulation of the sound coverage areas



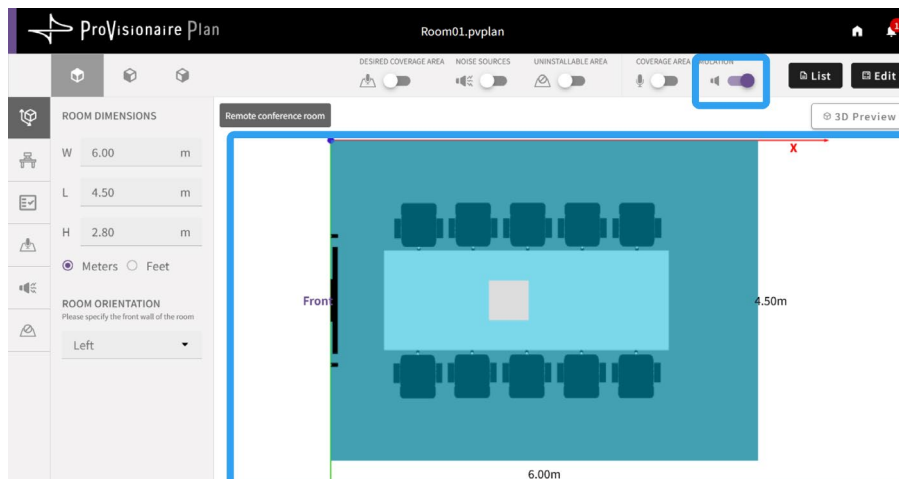
The results screen allows you to view a simulation of the coverage areas for the microphones and speakers. Confirm that the microphone and speaker coverage areas are as desired.

### Coverage area for microphones



1. Turn on (  ) the **Microphone** toggle.
2. The microphone coverage area is displayed in orange.

### Coverage area for speakers

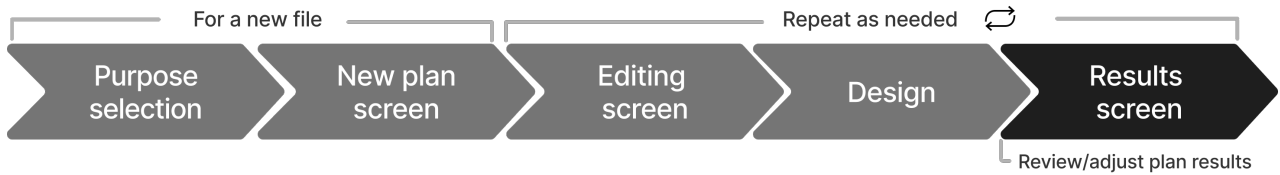


1. Turn on (  ) the **Speaker** toggle.
2. The speaker coverage area is displayed in light blue.

#### **Note**

The coverage areas for the microphones and speakers cannot be displayed at the same time.

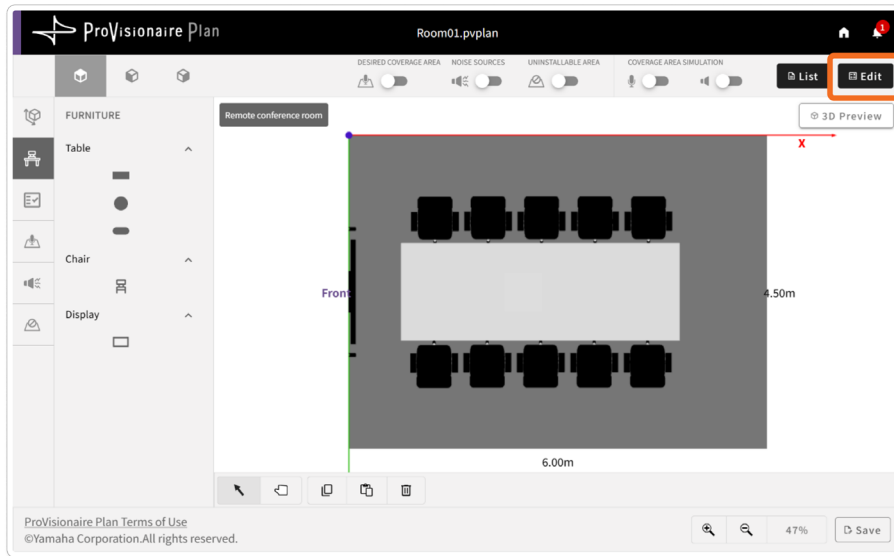
## 7. Changing the device quantities (if desired)



If the automatically generated plan results in a large number of devices, the quantity of each device can be reduced, and then the plan can be regenerated.

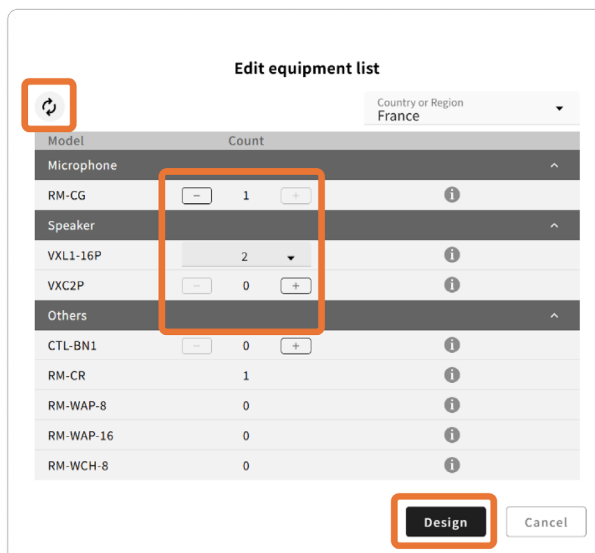
### Procedure for changing the device quantities

1. Click the [Edit] button.



The Edit screen appears.


2. In the Edit screen, change the quantities of the devices.



#### Changing the quantity of a device

- A – (minus) button or drop-down list appears beside devices whose quantity can be reduced.
- A + (plus) button appears beside devices that are not included in the plan but can be added.

#### Reverting to the device quantities of the original plan

Clicking the  (reset) button reverts any changed quantities to those in the original plan.

3. In the Edit screen, click the [Design] button to regenerate a plan with the changed quantities.

- ✓ When the plan has been generated, a results screen with the changed quantities appears.
- ✓ Make sure that the sound coverage areas meet your needs.







> 6. [Reviewing the simulation of the sound coverage areas](#) (page 13)

# Details on Operations

This section provides details on the various operations. Refer to this as needed.

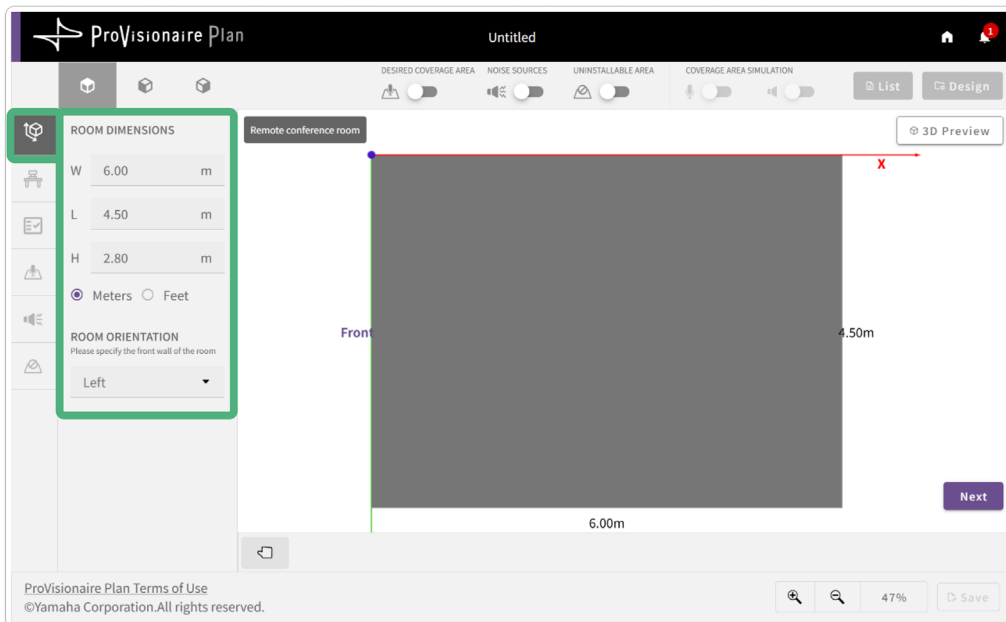
## Room Condition Specification Screens

Specify the following room conditions.

Icon	Items to be specified	Reference page
	Specifying the room size	Page 15
	Specifying the furniture arrangement	Page 16
	Selecting room requirements	Page 17
	Specifying sound coverage areas	Page 18
	Specifying noise sources and their locations	Page 19
	Specifying locations where devices cannot be installed	Page 20

### Specifying the room size

Specify the size and front of the room.



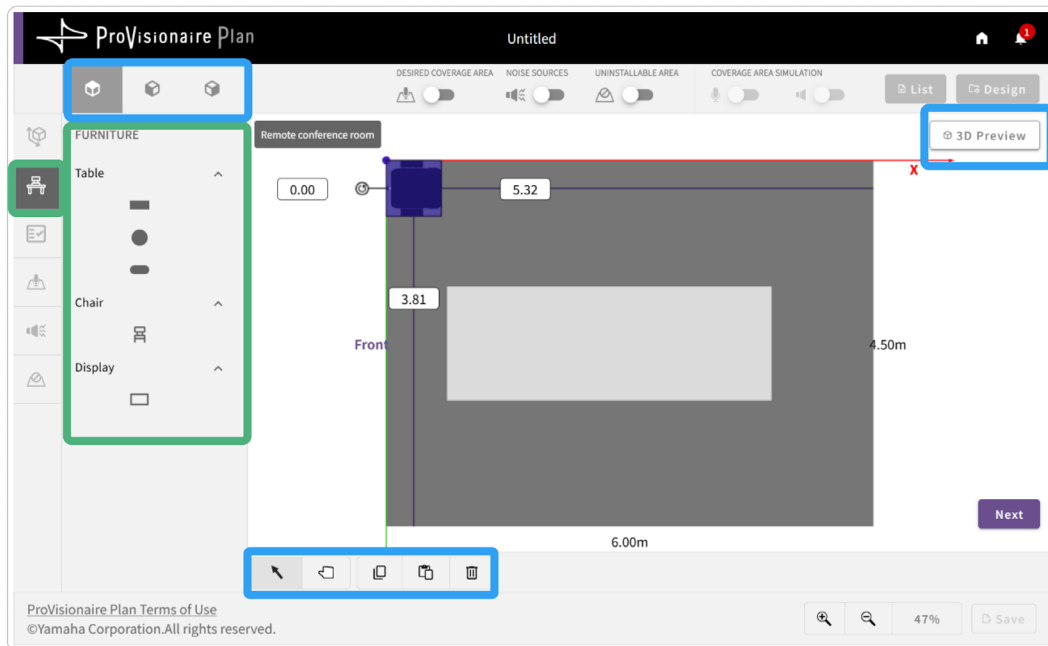
### Room specifications

**Room dimensions** Specify the width, length and height. Select “Meters” or “Feet” as the units for the entered values.

**Room orientation** Select which side of the arrangement view is the front (where the display, etc., is installed). What side is selected as the front affects the automatically generated plan for the microphones and speakers.

## Specifying the furniture arrangement

Arrange the furniture as it is in the room. Specify the size and location of furniture.



### Furniture types

The types of furniture available to be arranged depends on the purpose of the room.

### Procedure for specifying the furniture arrangement

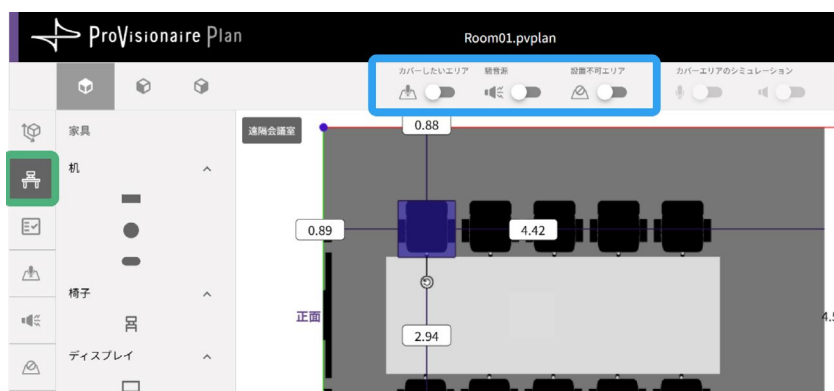
Clicking the icon for furniture to be arranged places the furniture in the floor corner of the room (origin of the X and Y axes in the arrangement view). Specify the size and location. If the device, for example, a display, is not installed on the floor, change the room view angle, and then specify the device's installation height. For details, refer to "Working with Objects".

> [Working with Objects](#) (page 21)

#### **Note**

Furniture can only be rearranged in the furniture screen.

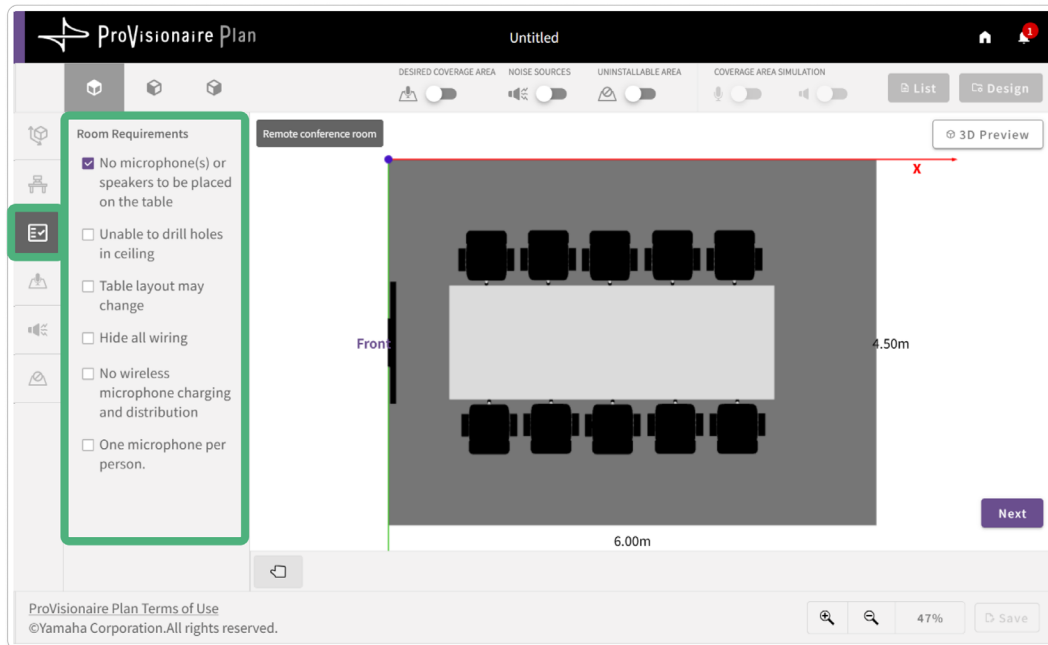
Furniture in the furniture screen can more easily be rearranged by hiding the various areas.





## Selecting room requirements

Select the requirements for arranging the devices (multiple selections can be made). The application automatically selects the devices most suitable for the selected requirements.

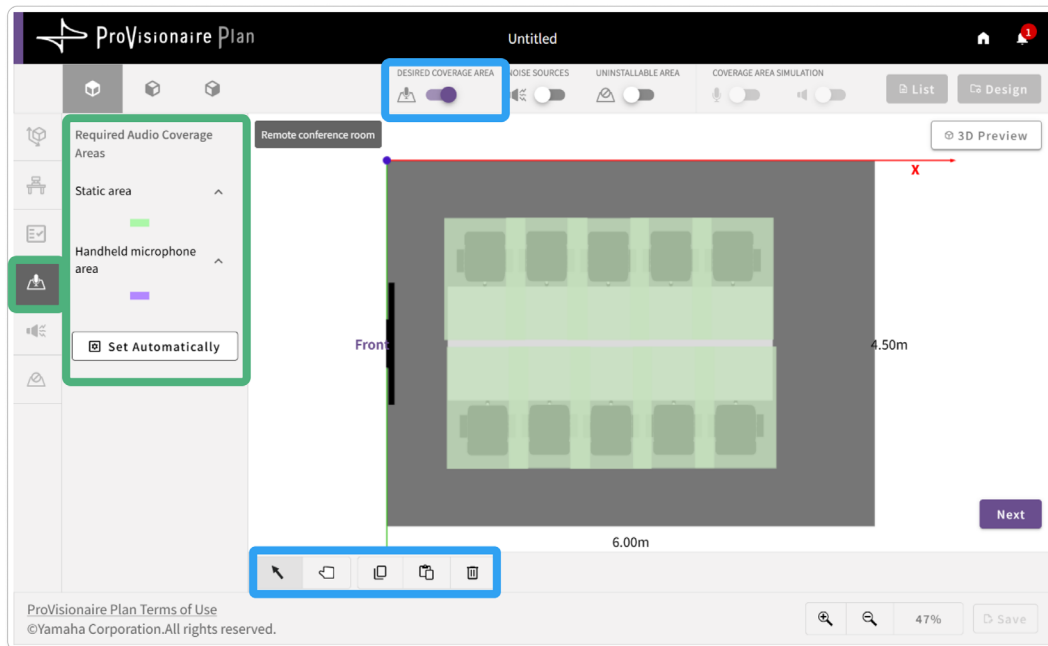


### Note

The generated plan may not always be able to address all of the selected requirements.

## Specifying sound coverage areas

Specify the areas to be covered by the microphones and speakers.



### Area types

- |                                 |   |
|---------------------------------|---|
| <b>Static area</b>              | Specifies the area to be covered by the microphones and speakers.                 |
| <b>Handheld microphone area</b> | Specifies the location where the handheld microphone is to be used.               |
| <b>Set Automatically</b>        | Click the [Set Automatically] button to automatically specify the coverage areas. |

### Procedure for specifying coverage areas

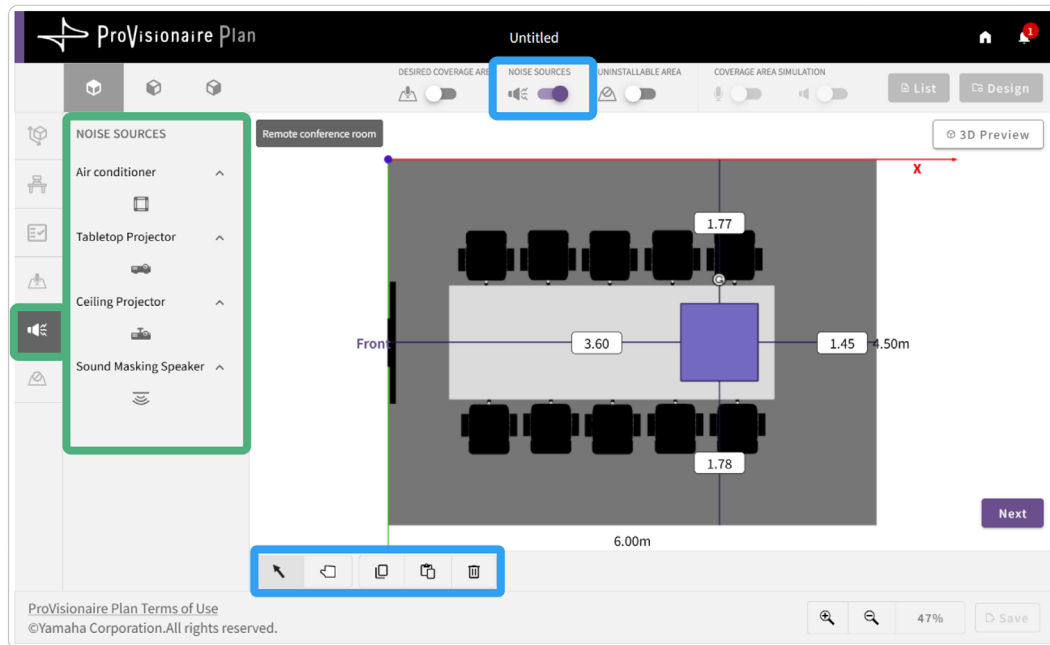
The first time that this screen is displayed the coverage areas are automatically arranged according to the chair locations.

Change the areas to be covered by either modifying an automatically specified area or by deleting an area and specifying a new one in the desired location. For details, refer to "Working with Objects".

> [Working with Objects](#) (page 21)

## 🔊 Specifying noise sources and their locations

If there is any noise-producing equipment in the room, specify its type and location. Specified noise sources affect the automatically generated plan for the microphones and speakers.



### Noise source types

**Air conditioner** Arranges the object on the ceiling.

**Tabletop Projector** Arranges the object on top of a desk.

**Ceiling Projector** Arranges the object on the ceiling.

**Sound Masking Speaker** Arranges the object on the ceiling.

### Procedure for specifying the arrangement of noise sources

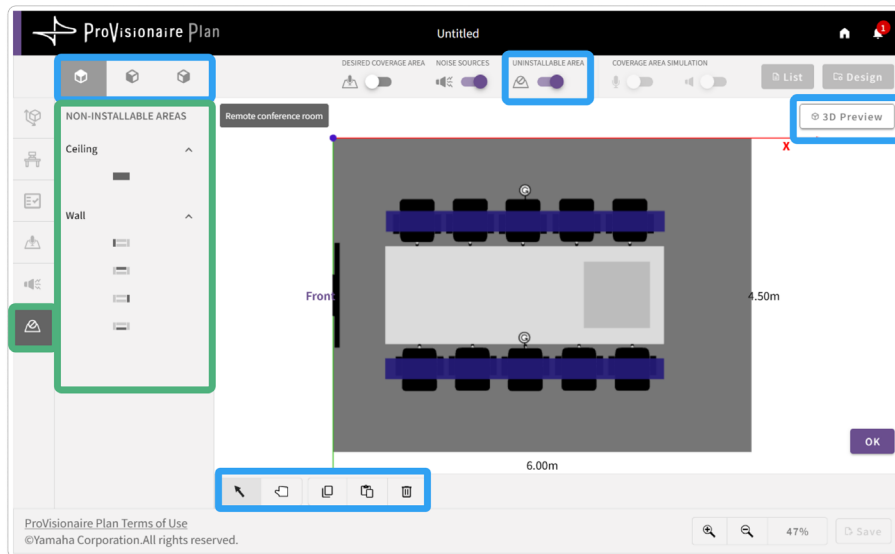
Clicking the icon for a noise source places it in the corner of the room (origin of the X and Y axes in the arrangement view). Specify the location.

For details, refer to “Working with Objects”.

> [Working with Objects](#) (page 21)

## Specifying locations where devices cannot be installed

If there are locations on the ceiling or wall where microphones or speakers cannot be installed (because of lighting, air conditioning, windows, etc.), specify those locations as non-installable areas.




### Non-installable area types

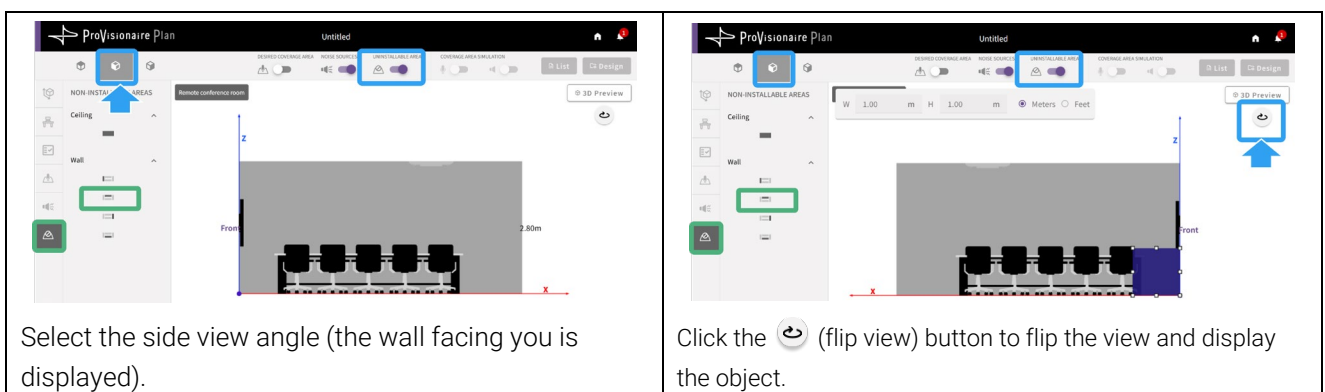
**Ceiling** Specifies a non-installable area on the ceiling.

**Wall** Specifies a non-installable area on a wall. Click the icon for the wall where the area is to be specified.

### Procedure for specifying non-installable areas

- Clicking the [Ceiling] icon under “NON-INSTALLABLE AREAS” places the object in a ceiling corner of the room.
- Clicking a [Wall] icon under “NON-INSTALLABLE AREAS” places the object in the corner of the selected wall (origin of the X and Y axes). These objects can only be viewed and modified while viewing them from the wall on which they are placed. Use the angle buttons and the  (flip view) button to view the object.

Example: When placed on the far wall



- For details on editing objects, refer to “Working with Objects”.

> [Working with Objects](#) (page 21)

- ✓ In the new plan screen: After specifying non-installable areas, click the [OK] button. This completes the procedure guide, and the plan can be edited.

> [Generating the plan](#) (page 10)

# Working with Objects

Furniture, devices and areas are arranged by editing their objects in the arrangement view.



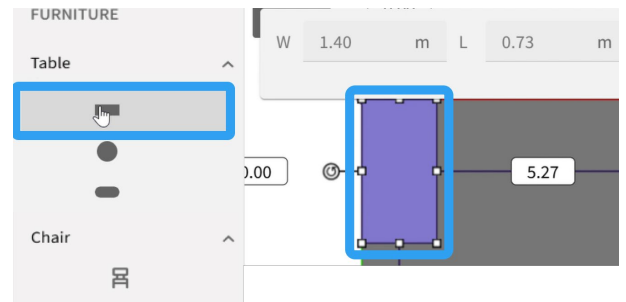
Use the selection tool to edit objects.

For details on using other buttons and tools, refer to the pages providing details on the corresponding screen.

> Details on Screens: [Arrangement Views/Editing Tools](#) (page 24)

## Arranging objects

- Select the top view angle.
- Clicking an icon in the settings panel places the corresponding object in the top left of the room in the arrangement view.

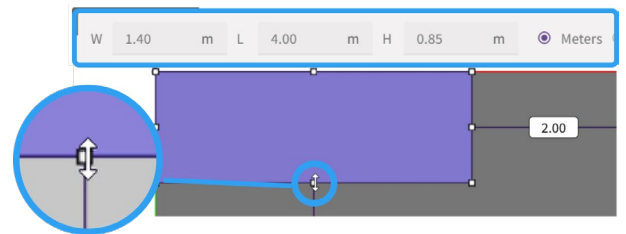


## Specifying the object size

When an object whose size can be specified is selected, a settings bar appears.

Specify the size in one of the following ways:

- Specify values in the settings bar.
- Move the mouse pointer over a point in the object, and, when the arrow appears, drag the point to resize the object.



## Selecting objects

Select the object to be edited.

Display the condition screen for the object to be edited.

(For example, furniture can only be arranged and selected from the furniture screen.)

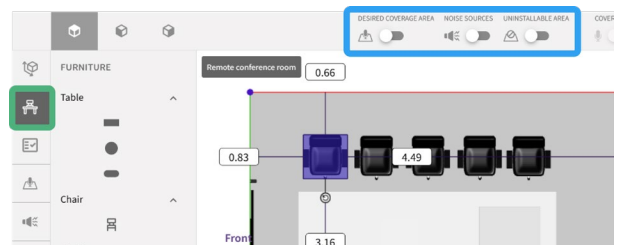
Select in one of the following ways:

### To select one object:

- Place the mouse pointer over an object and, when the object changes color, click the object.

### To select multiple objects:

- While holding down the Ctrl key, click the objects to be selected.
- Drag the mouse pointer over all objects to be selected in order to select them all.



To edit the furniture arrangement, display the furniture screen.



Click an object after it changes color.

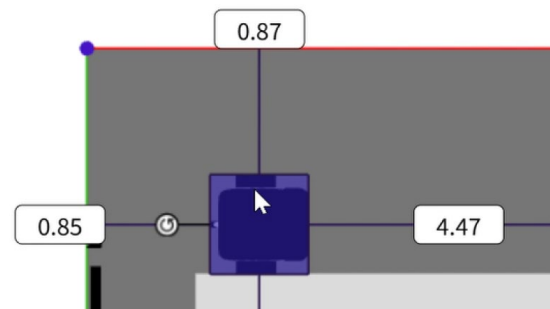


Select multiple objects at the same time.

## Adjusting the object location

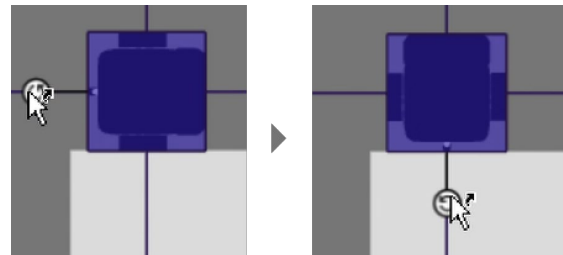
Select an object, and adjust its location according to the actual room arrangement.

- The distances between the selected object and the walls and ceiling appear.
- Move an object by dragging it with the mouse or by using the arrow keys on the keyboard.



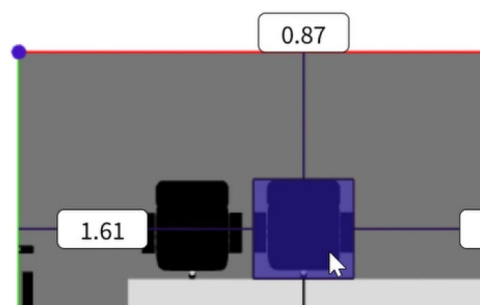
## Rotating objects (that can be rotated)

When an object that can be rotated is selected, a rotation handle appears. When the mouse pointer is moved over the rotation handle, an arrow appears. Drag the rotation handle to rotate the object.




## Duplicating objects

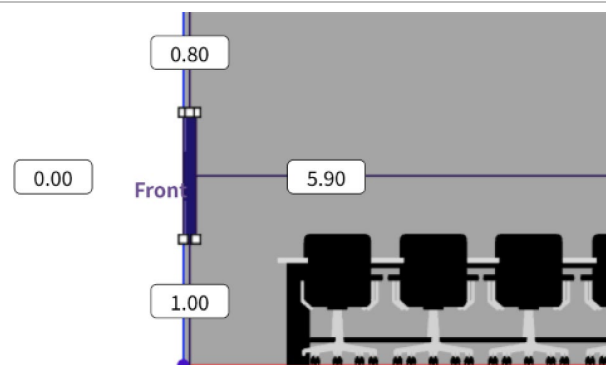
If multiple copies of the same object are needed, copy and paste the object to create as many as needed. After the pasted object is placed in the top left of the room in the arrangement view, its position can be edited.



## Switching the view angle in order to specify the object arrangement height

The height must be specified for objects that are not attached to the floor or ceiling. Specify the height by using the side or front/back view angles.

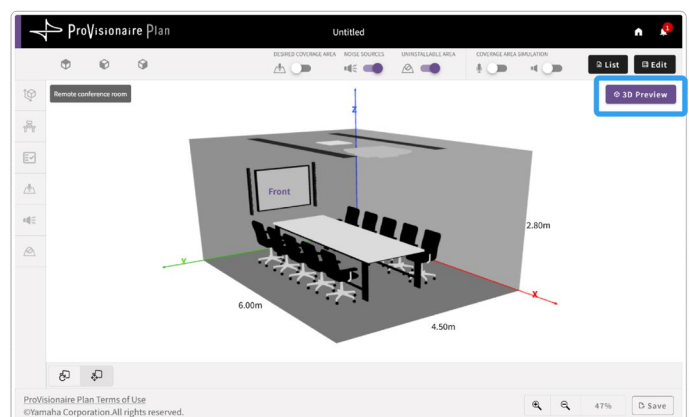
- When using a side, front or back view angle, only objects placed on the wall facing you can be viewed and edited.
- Objects placed on the opposite side can be displayed by clicking the  (flip view) button to flip the view.



## Displaying a 3D preview

Click the [3D Preview] button to display a 3D preview.

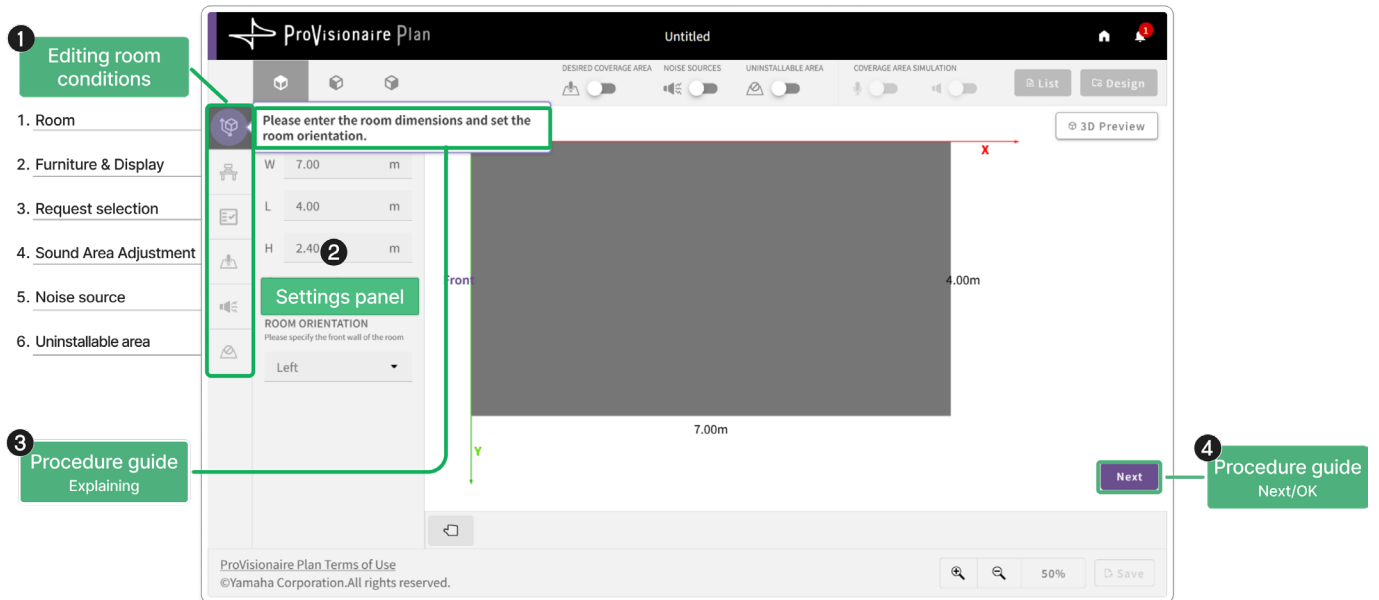
- Drag the arrangement view to rotate the room up to 360 degrees.



# Details on Screens

This section provides details about each screen. Refer to this as needed.

## Room Condition Specification Screen/Procedure Guide



### 1 Room conditions

Icon	Items to be specified	Reference page
	Specifying the room size	Page 15
	Specifying the furniture arrangement	Page 16
	Selecting room requirements	Page 17
	Specifying sound coverage areas	Page 18
	Specifying noise sources and their locations	Page 19
	Specifying locations where devices cannot be installed	Page 20

### 2 Settings panel

Displays items that can be specified for the selected room condition.

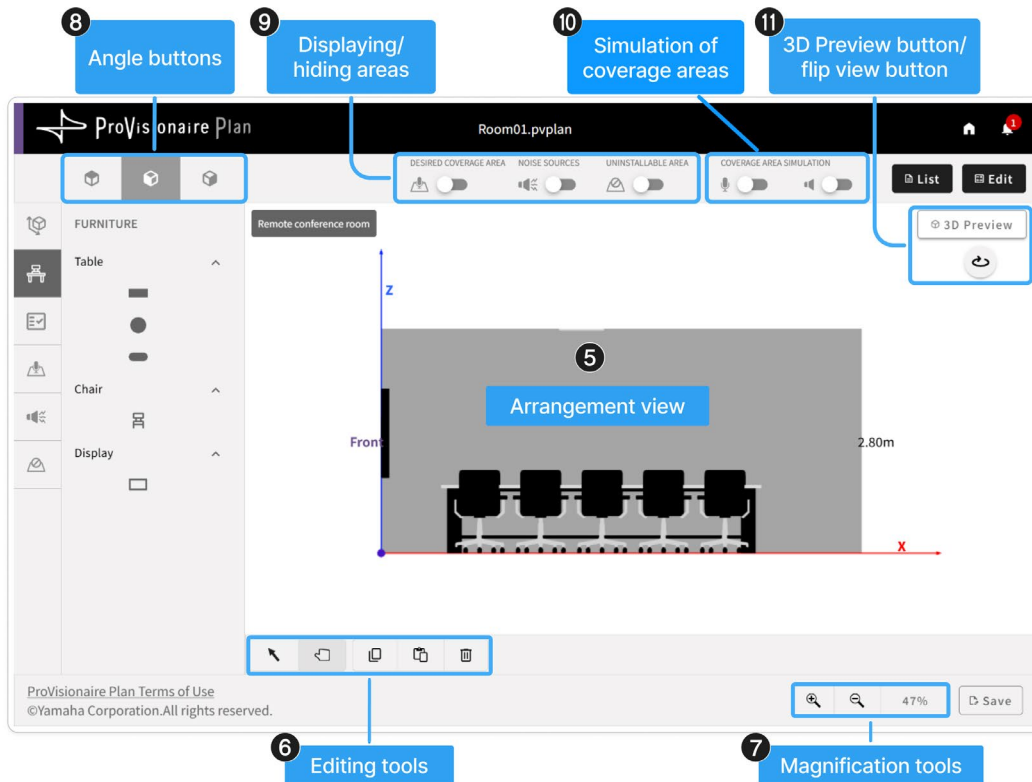
### 3 Procedure guide (displayed only in new plan screen)

Details appear, explaining what to do in this screen.

### 4 Procedure guide button (displayed only in new plan screen)

Clicking the [Next] button continues to the next screen. The procedure guide is finished when the information for all room conditions has been specified in the given order.

## Arrangement Views/Editing Tools



### 5 Arrangement view

Displays the room arrangement and coverage areas.

### 6 Editing tools

Use to move and edit objects in the **arrangement view** (5).

#### Move tools




Button	Function	Description
	Selection tool	Selects objects in the arrangement view. <ul style="list-style-type: none"> <li>Clicking this button changes the mouse pointer to an arrow.</li> <li>Move the selected object by dragging it with the mouse or by using the arrow keys on the keyboard.</li> </ul>
	Hand tool	Navigates the canvas. <ul style="list-style-type: none"> <li>Clicking this button changes the mouse pointer to a hand.</li> <li>Drag the canvas to navigate it.</li> </ul>

#### Move tools \* Displayed only in 3D preview (11)

Button	Function	Description
	Rotate	Drag the 3D preview to rotate it up to 360 degrees.
	Move	Navigates (up, down, left or right) the 3D preview of the room.


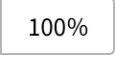


**Operation tools \* Displayed only in the screen for editing objects**

Button	Function	Description
	Copy	Clicking this tool while an object is selected copies the object. Copied objects are deleted when a different room condition is selected.
	Paste	Pastes the copied object.
	Delete	Deletes the selected object.

**7 Magnification tools**

Use to zoom in on or out of the **arrangement view (5)**.

Button	Function	Description
	Zoom in/out	Zooms in on or out of the displayed room. Each press of the button changes the magnification by 10%.
	Magnification ratio	Displays the magnification ratio.

**8 Angle buttons**

Use to change the angle at which the room is displayed in the **arrangement view (5)**.

Top view angle	Side view angle	Back view angle
		



**9 Displaying/hiding areas**

Use these toggles to display/hide the following areas.



Coverage areas	Noise sources	Non-installable areas
		

**10 Simulation of coverage areas**

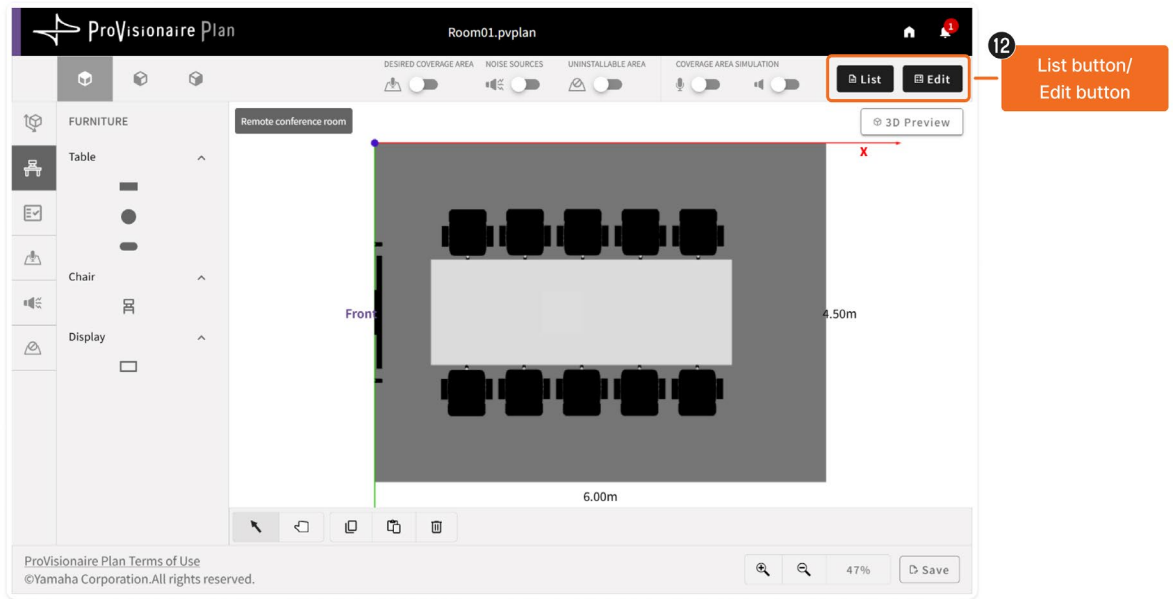
Use these toggles to display/hide the simulation of the coverage areas for the microphones and speakers. Only the coverage area for either the microphones or the speakers can be displayed.

Microphones	Speakers
	

**11 [3D Preview] button/flip view button**

Button	Function	Description
	Display/hide 3D preview	Displays a 3D preview of the room in the <b>arrangement view (5)</b> . <ul style="list-style-type: none"> <li>Clicking this button again returns to a 2D view.</li> <li>The arrangement of objects cannot be edited in the 3D preview.</li> </ul>
	Flip view	Flips the view to display the opposite side of the room. <ul style="list-style-type: none"> <li>This button is available only when the side view or back view <b>angle button</b> has been selected.</li> <li>Objects arranged on a wall are visible only when the wall is facing you.</li> </ul>

## Buttons for Plans/Proposed Devices



### 12 [Design] button/[List] button/[Edit] button

#### Button functions

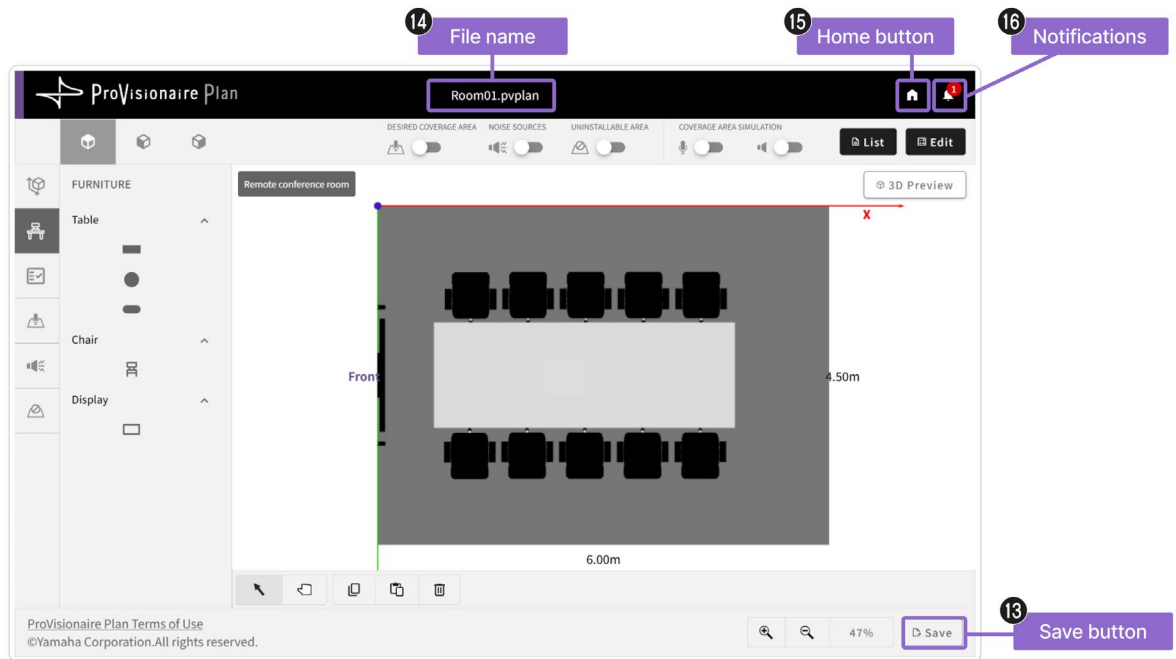
Button	Description	Reference page
<b>Design</b>	Automatically generates a plan from the specified room conditions.	Page 10
<b>List</b>	Displays a list of the proposed devices from the generated plan.	Page 12
<b>Edit</b>	Displays a screen where the quantities of the proposed devices can be changed.	Page 14

The buttons that appear differ depending on the screen.

#### Displayed buttons

Screen	Displayed buttons	Description	Reference page
<b>New plan screen</b>	<b>List</b> <b>Design</b>	Neither is available.	Page 8
<b>Editing screen</b>	<b>List</b> <b>Design</b>	A plan can be generated. After the plan in the editing screen has been generated, the results screen appears.	Page 9
<b>Results screen</b>	<b>List</b> <b>Edit</b>	The list of devices can be displayed, and their quantities can be changed. After the device quantities have been changed and the [Design] button is clicked, the editing screen appears again.	Page 11

## Application elements



### 13 [Save] button

Saves the plan. The saved plan file can be opened from the top screen.

\* A plan in the new plan screen cannot be saved. Specify all room conditions, and then close the new plan screen.

### 14 File name

Displays the file name of the plan.

### 15 Home button

Returns to the top screen.

### 16 Notifications

Displays ProVisionaire Plan notifications.

